

HARRIMAN

AUBURN PORTLAND MANCHESTER

RENOVATIONS FOR ALERE

SCARBOROUGH, ME

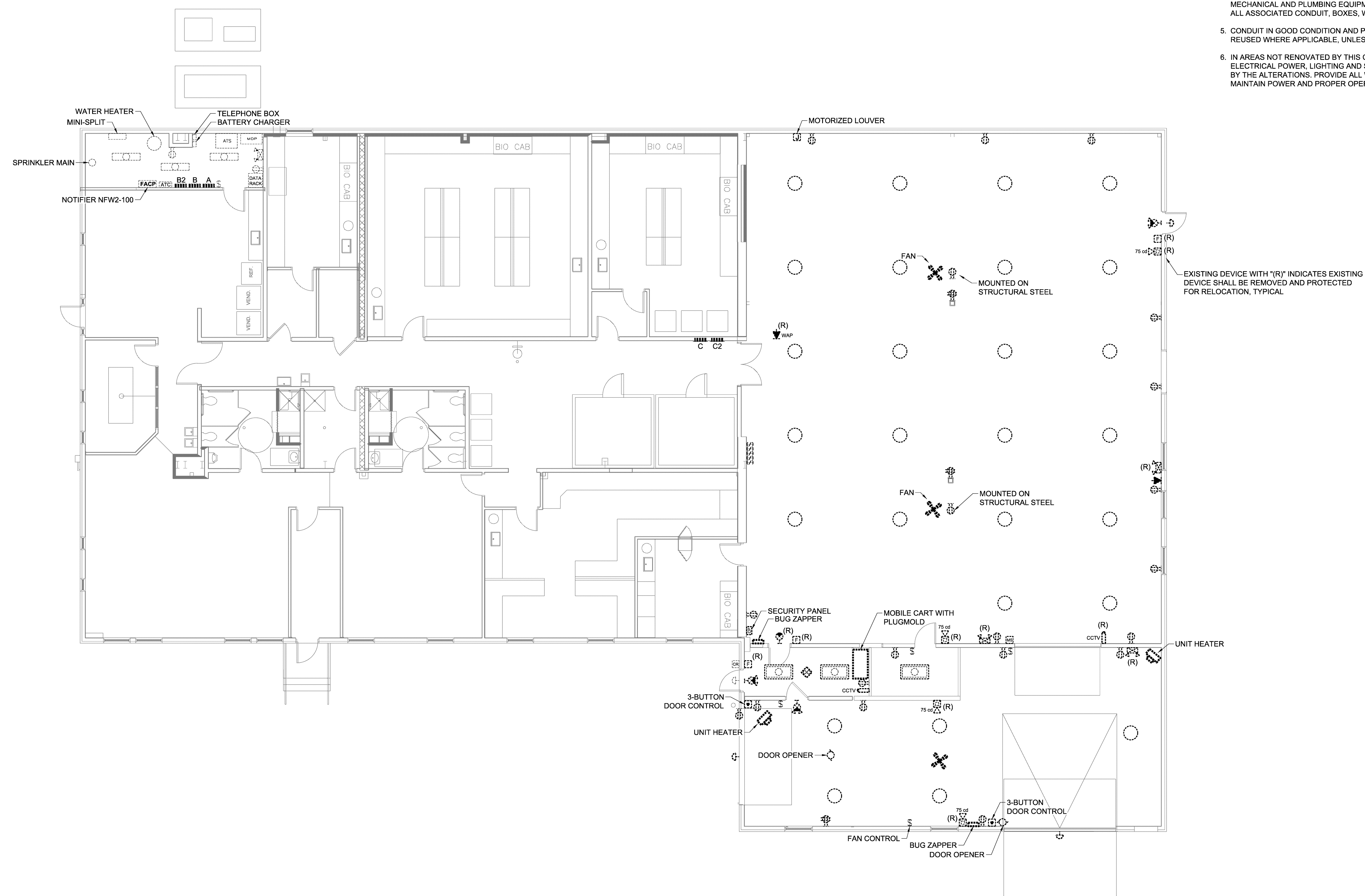
Harriman Project No. 15605

Key Plan Prj North



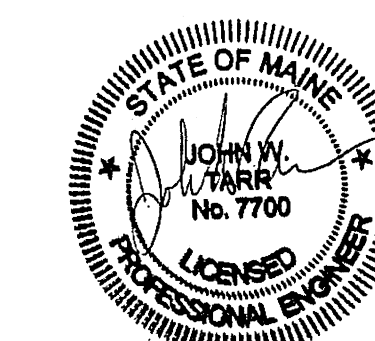
DEMOLITION NOTES:

1. ELECTRICAL INDICATED IS AS GENERALLY FOUND (DECEMBER 2015). THE INTENT OF THE EXISTING CONDITIONS PLAN(S) IS TO DOCUMENT EXISTING CONDITIONS. HOWEVER, ALL ELECTRICAL DEVICES MAY NOT NECESSARILY BE INDICATED ON THE DRAWINGS. FIELD VERIFY AND ADJUST WORK TO SUIT ALL FOUND.
2. REFER TO FLOOR PLANS TO DETERMINE EXTENT OF WORK IN EACH AREA, INCLUDING WHETHER DEVICES ARE TO REMAIN, BE REMOVED, REPLACED, ETC... EXCEPT AS NOTED, GENERALLY THE INTENT IS THAT IF EXISTING DEVICES ARE SHOWN ON THE EXISTING CONDITIONS PLANS AND NEW DEVICES ARE SHOWN ON THE FLOOR PLANS THEN EXISTING DEVICES ARE TO BE REMOVED. IF EXISTING DEVICES ARE SHOWN ON BOTH THEN DEVICES ARE TO REMAIN.
3. ALL EXISTING ITEMS INTENDED FOR REMOVAL SHALL BE REMOVED WITH ALL ASSOCIATED HARDWARE INCLUDING, BUT NOT LIMITED TO: CONDUIT, BOXES, WIRING, CABLES, HANGERS, ETC...
4. COORDINATE WITH MECHANICAL AND PLUMBING DRAWINGS FOR MECHANICAL AND PLUMBING EQUIPMENT TO BE REMOVED. REMOVE ALL ASSOCIATED CONDUIT, BOXES, WIRING, ETC...
5. CONDUIT IN GOOD CONDITION AND PROPERLY LOCATED MAY BE REUSED WHERE APPLICABLE, UNLESS NOTED OTHERWISE.
6. IN AREAS NOT RENOVATED BY THIS CONTRACT VERIFY THAT ELECTRICAL POWER, LIGHTING AND SYSTEMS ARE NOT AFFECTED BY THE ALTERATIONS. PROVIDE ALL WORK AS REQUIRED TO MAINTAIN POWER AND PROPER OPERATION OF SYSTEMS.



Issues and Revisions

Mark	Date	Description
--	02-04-16	CONSTRUCTION DOCUMENTS



Drawing Scales 1/8" = 1'-0" 0 4' 8' 12'

PA / PE: JWT © 2016
Drawn By: BSO Harriman Associates

FIRST FLOOR EXISTING CONDITIONS PLAN

E05.1