

HARRIMAN

AUBURN PORTLAND MANCHESTER

RENOVATIONS FOR ALERE

SCARBOROUGH, ME

Harriman Project No. 15605

Key Plan

Proj North

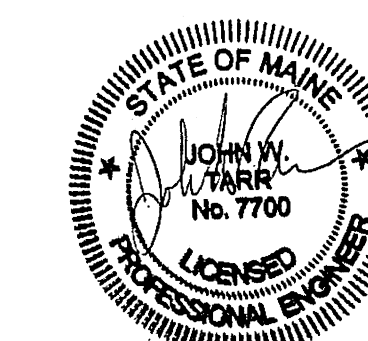


Design Installations Service

207 795-7800

Issues and Revisions

| Mark | Date | Description |
|------|----------|------------------------|
| -- | 02-04-16 | CONSTRUCTION DOCUMENTS |



Drawing Scales 1/8" = 1'-0"



PA / PE: JWT
Drawn By: BOS

© 2016
Harriman Associates

FIRST FLOOR PLAN POWER AND SYSTEMS

E20.1

KEY NOTES:

P01... 2-CIRCUIT PLUGMOLD (PLUGMOLD 2000 SERIES OR SIMILAR) WITH SEPERATE NEUTRALS (2 HOTS, 2 NEUTRALS AND GROUND). RECEPTACLES LOCATED 12" ON CENTER. PLUGMOLD SHALL BE MOUNTED CIL UP 4" ABOVE BACKSPASH, TYPICAL.

P02... NEMA L6-30R RECEPTACLE. LOCATE TO SERVE LYOPHILIZER.

P03... TABLETOP TOMBSTONE (WIREMOLD AL241S-HB OR SIMILAR) WITH (2) DUPLEX RECEPTACLES AND (2) DATA DROPS PER TOMBSTONE. TYPICAL.

P04... PROVIDE (2) 1" FOR DATA AND (1) 3/4" FOR POWER TO SERVE TABLETOP TOMBSTONES FROM TABLE TO ABOVE CEILING.

P05... PROVIDE (1) 1" FOR DATA AND (1) 3/4" FOR POWER TO SERVE TABLETOP TOMBSTONES FROM TABLE TO ABOVE CEILING.

P06... LOCATE TO SERVE INCUBATOR SUPPLY HEATER. COORDINATE EXACT LOCATION WITH EQUIPMENT VENDOR.

P07... LOCATE TO SERVE WALK-IN COOLER EVAPORATOR. COORDINATE WITH EQUIPMENT VENDOR. SEAL ALL PENETRATIONS THROUGH COOLER PANELS, INSIDE AND OUTSIDE OF CONDUITS.

P08... LOCATE TO SERVE WALK-IN COOLER. COORDINATE WITH EQUIPMENT VENDOR. SEAL ALL PENETRATIONS THROUGH COOLER PANELS, INSIDE AND OUTSIDE OF CONDUITS.

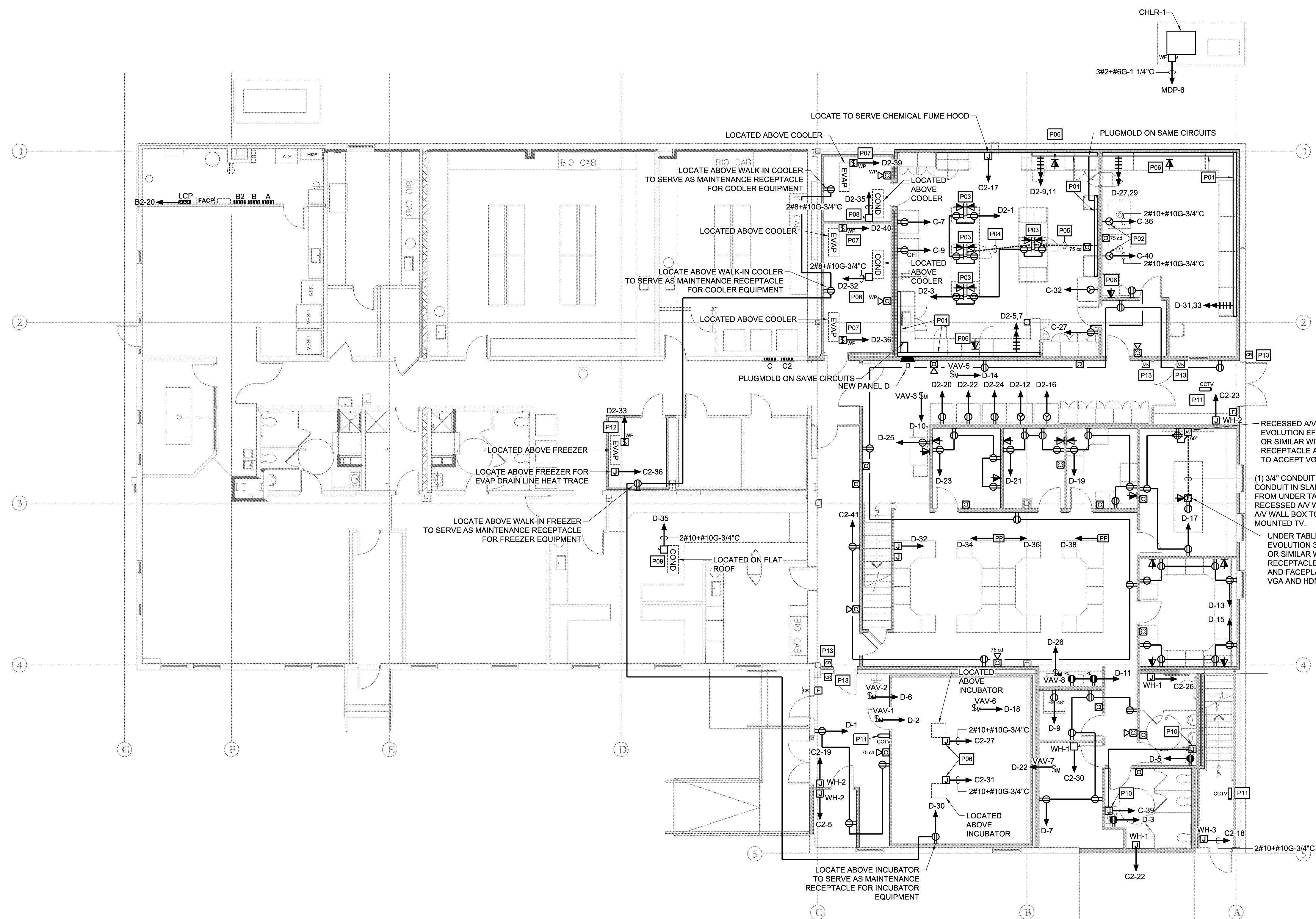
P09... LOCATE TO SERVE WALK-IN FREEZER. COORDINATE WITH EQUIPMENT VENDOR. SEAL ALL PENETRATIONS THROUGH COOLER PANELS, INSIDE AND OUTSIDE OF CONDUITS.

P10... LOCATE AS REQUIRED TO SERVE ELECTRIC FAUCET.

P11... RELOCATED EXISTING CCTV CAMERA. RECONFIGURE WIRING AS REQUIRED TO MAINTAIN OPERATION IN NEW LOCATION. CONNECT TO EXISTING SECURITY PANEL IN ELECTRIC ROOM. COORDINATE WITH SECURITY VENDOR.

P12... LOCATE TO SERVE WALK-IN FREEZER EVAPORATOR. COORDINATE WITH EQUIPMENT VENDOR. SEAL ALL PENETRATIONS THROUGH COOLER PANELS, INSIDE AND OUTSIDE OF CONDUITS.

P13... CONNECT NEW FOB CARD READER TO EXISTING CARD ACCESS SYSTEM. ALL NEW WIRING SHALL RUN BACK TO SECURITY PANEL LOCATED IN ELECTRIC ROOM. COORDINATE WITH SECURITY VENDOR.



RECESSED A/V WALL BOX - EVOLUTION EFSB2 SERIES OR SIMILAR WITH (1) DUPLEX RECEPTACLE AND FACEPLATE TO ACCEPT VGA AND HDMI.
(1) 3/4" CONDUIT FOR POWER, (1) 1 1/2" CONDUIT IN SLAB FOR DATA & A/V, FROM UNDER TABLE FLOOR BOX TO RECESSED A/V WALL BOX - LOCATE A/V WALL BOX TO SERVE WALL MOUNTED TV.
UNDER TABLE FLOOR BOX - EVOLUTION 3FB6 SERIES OR SIMILAR WITH (2) DUPLEX RECEPTACLE, (2) DATA DROPS AND FACEPLATE TO ACCEPT VGA AND HDMI.