

HARRIMAN

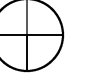
AUBURN PORTLAND MANCHESTER

HARTT  
TRANSPORTATION

Auburn, ME

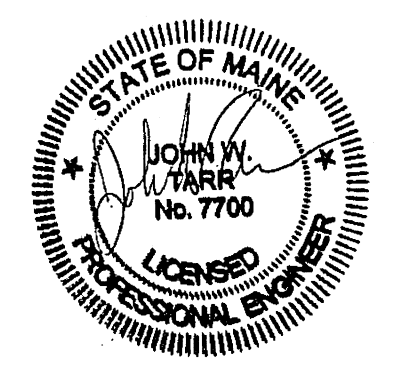
Harriman Project No. 14507

Key Plan Proj North



Issues and Revisions

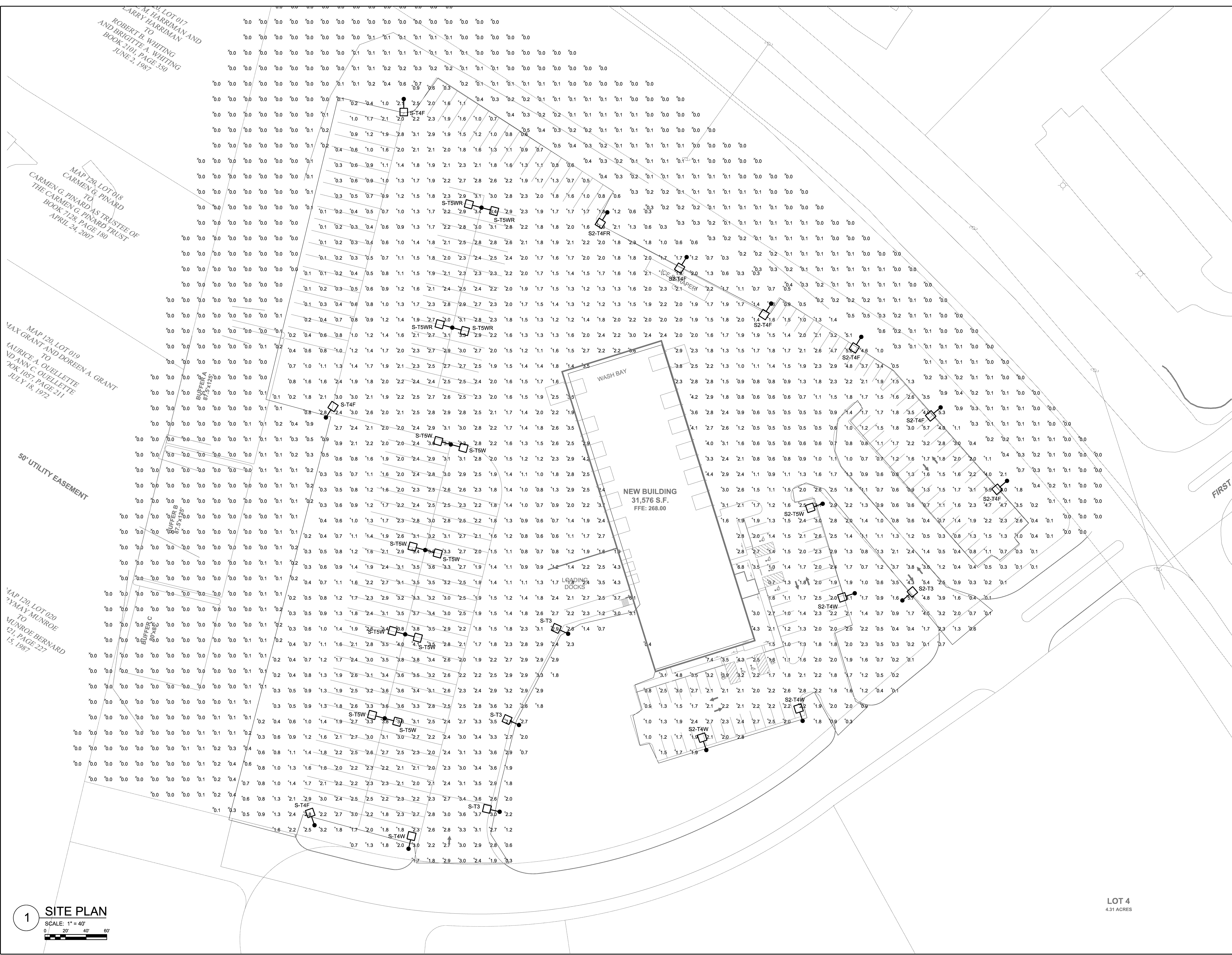
Mark	Date	Description
--	10-20-14	PROGRESS
--	11-14-14	PROGRESS
--	12-08-14	PROGRESS
--	01-14-15	FOR CONSTRUCTION



PA / PE: JWT	© 2015 Harriman Associates
Drawn By: PCN	

SITE PLAN  
PHOTOMETRIC

ES0.2



MAP 129, LOT 017  
LARRY HARRIMAN AND  
ROBERT B. WHITING  
TO  
CARMEN G. PINARD  
BOOK 2101, PAGE 350  
JUNE 2, 1987

MAP 129, LOT 018  
CARMEN G. PINARD  
TO  
THE CARMEN G. PINARD TRUST  
BOOK 7128, PAGE 180  
APRIL 24, 2007

MAP 120, LOT 019  
TO  
MAURICE A. OUELLETTE  
AND ANN C. OUELLETTE  
BOOK 1057, PAGE 211  
JULY 18, 1972

50' UTILITY EASEMENT

MAP 120, LOT 020  
TO  
MUNROE BERNARD  
BOOK 121, PAGE 227  
15, 1987

1 SITE PLAN  
SCALE: 1" = 40'  
0 20' 40' 60'

LOT 4  
4.31 ACRES